

DUO

SPITALFIELDS

Final two suites –
from 10,301 sq ft available early 2022

HELLODUO.LONDON



A prime London location, moments from Liverpool Street Station in the heart of Spitalfields

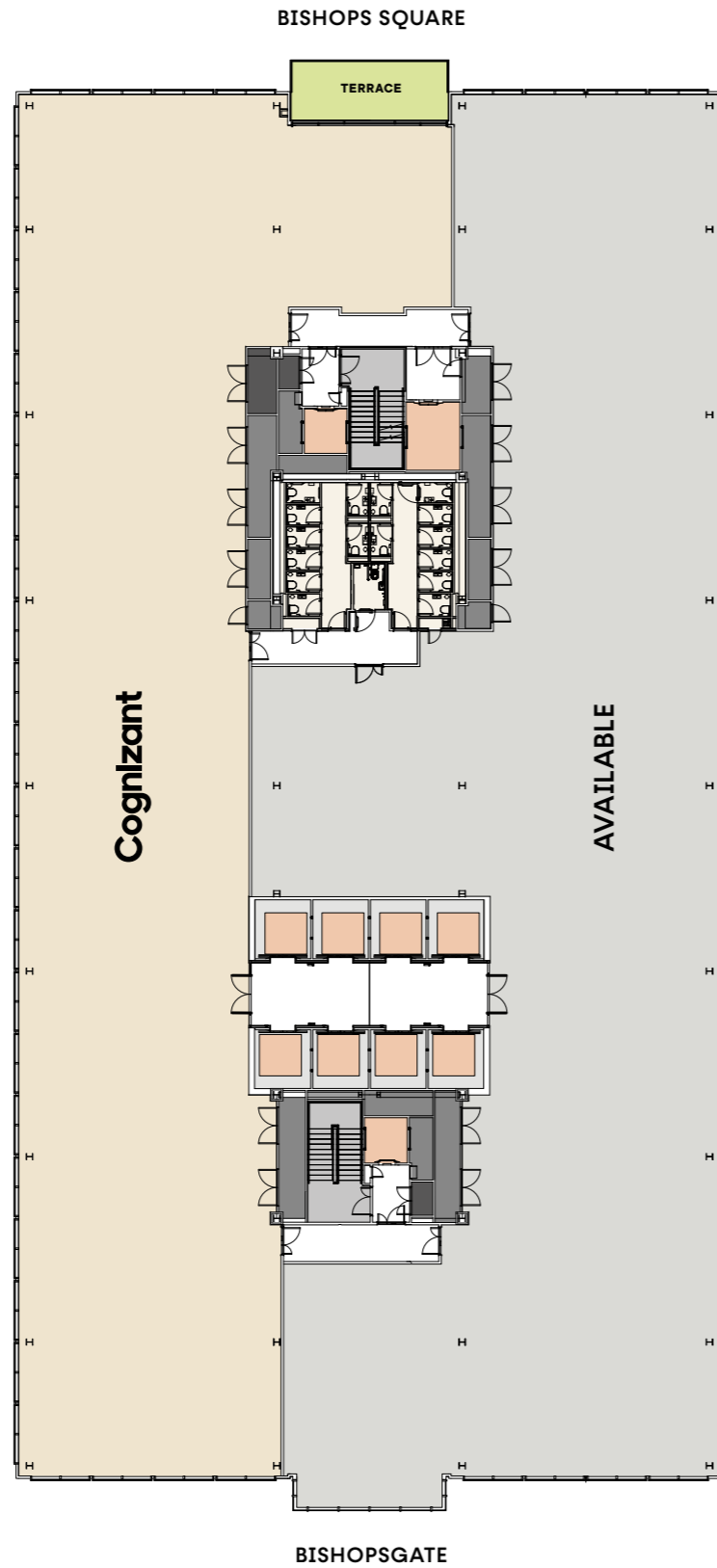
21,418 SQ FT REMAINING
EXPANSIVE COMMUNAL
ROOF GARDENS (6,000 SQ FT)
ONSITE BARISTA BAR

TERRACES ON EVERY LEVEL
WELLNESS SUITE AND LUXURY
END OF TRIP FACILITIES
1:8 OCCUPANCY DENSITY

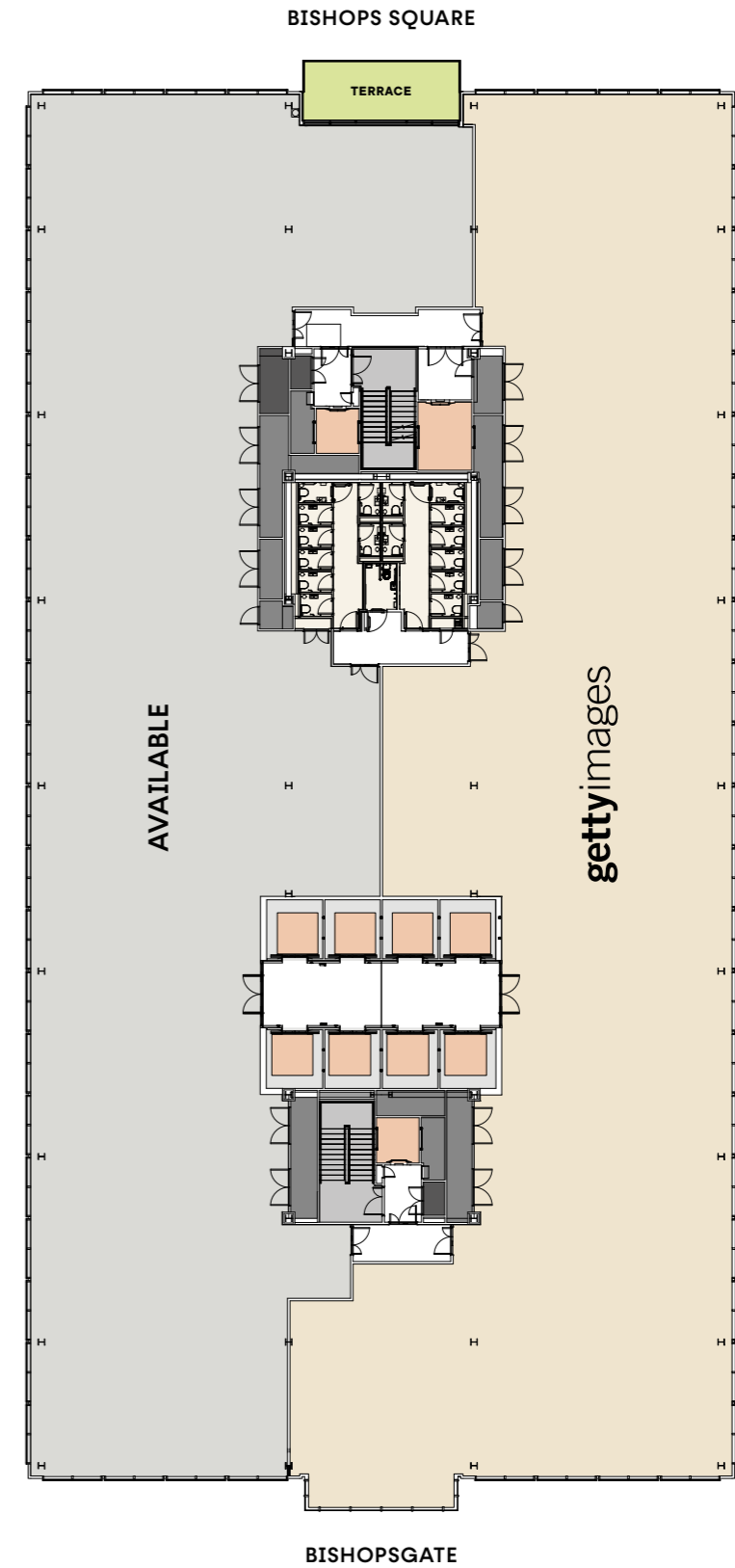
WELL PLATINUM AND
BREEAM OUTSTANDING
7,800 SQ FT DUAL
BUILDING RECEPTION

Floor plans

Level 3 south
11,117 sq ft



Level 6 north
10,301 sq ft

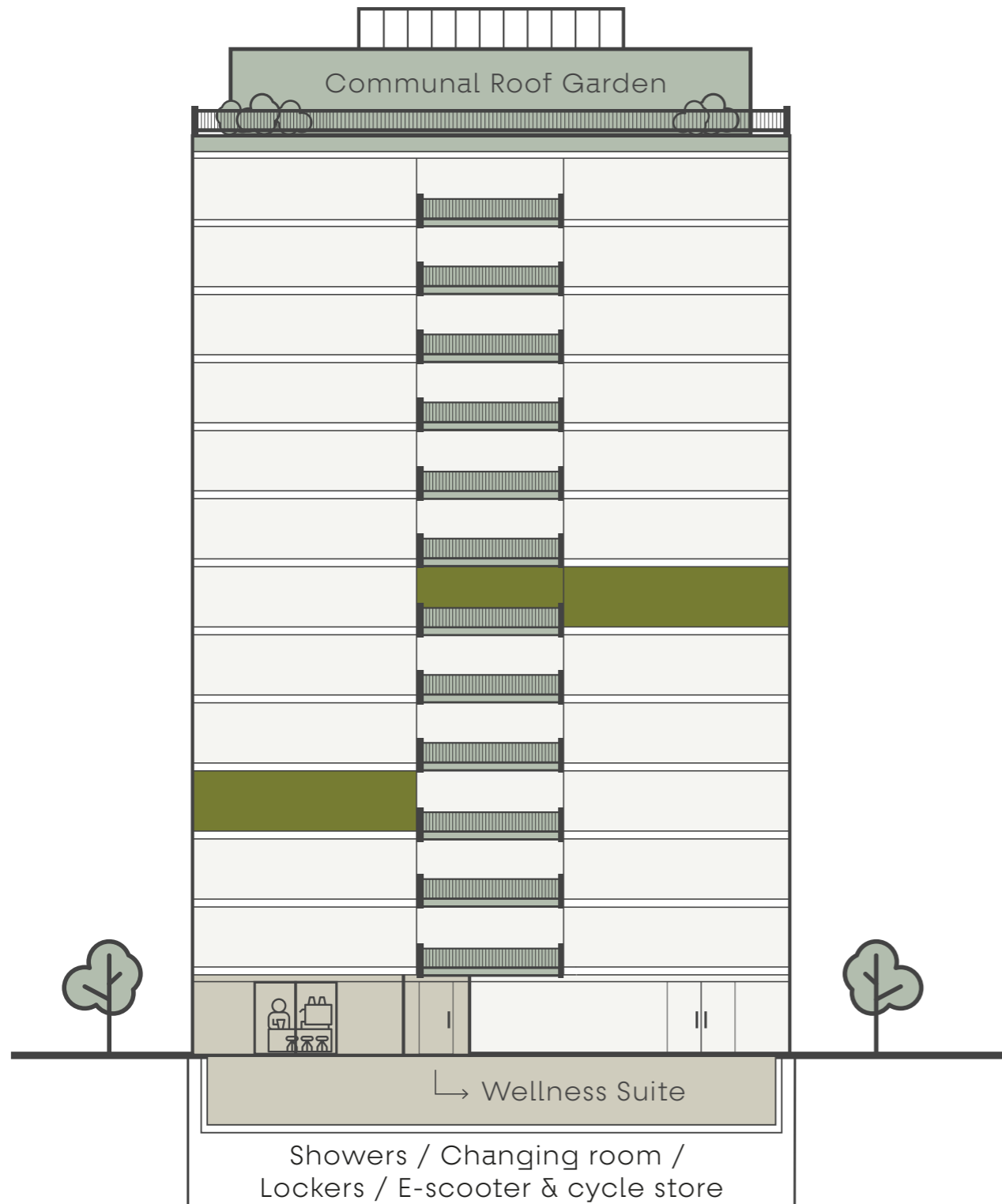


- AVAILABLE
- LET
- ESCAPE STAIR
- TERRACE
- LIFTS
- DRY RISERS
- RISERS



Not to scale. For indicative purposes only.

Availability



280
BISHOPS SQ

Level	NIA* (SQ FT)	Availability
Communal Roof Garden	6,000	
L12	18,000	Baker McKenzie
L11	21,200	Baker McKenzie
L10	21,200	Baker McKenzie
L9	21,200	Baker McKenzie
L8	21,200	Baker McKenzie
L7	21,200	Baker McKenzie
L6 North	10,301	Available
L6 South	10,419	Getty Images
L5	21,202	Cognizant
L4	21,202	Cognizant
L3 North	8,636	Cognizant
L3 South	11,117	Available
L2	21,203	Abrdn
L1	19,314	Abrdn
Communal reception/barista bar	7,800	-
Wellness Suite	4,200	Under Offer
Total Office Availability	21,418	

The above net internal floor areas under the 6th edition of the RICS Code are estimations only, to be verified on Practical Completion.
* Subject to final floor split design.

Get in touch



Jack Beeby
+44(0)7841 802 097
jackb@bh2.co.uk



Eleanor Reed
+44 (0)20 3296 2080
eleanor.reed@cushwake.com



Chris Vydra
+44 (0)7710 618 023
chris.vydra@cbre.com

Matt Waugh
+44 (0) 7912 977 980
matt.waugh@cushwake.com

HELLO DUO . LONDON

A DEVELOPMENT BY
ARAX PROPERTIES

Important notice relating to the Misrepresentation Act 1967 and the Property Misdescriptions Act 1991: (i) the particulars are set out as a general outline only for guidance of intending lessees and do not constitute, nor constitute part of, an offer or contract (ii) all descriptions, dimensions, references to condition and necessary permission for use and occupation, and other details are given in good faith and are believed to be correct at the time of publication, and are subject to any necessary third party consents. The developer reserves the right to evolve design through to delivery of the project. Any intending occupiers should not rely on them as statements or representations of fact, but must satisfy themselves by inspection and taking other professional advice as to the correctness of each of them. CGI renders are shown for illustrative purposes only. January 2022. Designed by Saentys +44 (0)20 7407 8717 www.saentys.com | Document reference No. 0352021

